

# AirHammer 24-36m

-10.000 l tank, capacity per tank - 300 ha







# AirHammer 24-36 m

- 10.000 l tank, capacity per tank - 300 hektar

AirHammer is Danfoil's largest sprayer. It is built to run non-stop 24 hours a day. With a capacity of 300 Ha per filling, it must only be tanked twice a day. The machine has been developed together with our partners, who have many years of experience in chassis production and development for the tough conditions in Eastern Europe. With its bogie chassis (produced by German Zunhammer), AirHammer offers a good comfort and a stable and calm boom. The design is designed for HeavyDuty conditions, and user-friendliness and service are top priority

### Benefits you can not get around

When the driver is in the fields with an AirHammer he has a huge spraying capacity. With a 10,000 liter tank, he can spray up to 300 hectares per day filling. The high capacity is due to a low fluid consumption of 30 to 50 liters per hectare. AirHammer can be fitted with a separate filling pump, and filling can therefore be completed in 15 minutes.

### Fully automatic cleaning programs

The sprayer is equipped with intelligent electric valves and therefore the driver no longer need to go out of the cab to operate the sprayer. Everything is done by pressing a button on the DSC screen. The 3 fully automatic programs ensure optimum cleaning of the sprayer after each spraying, and that the residual fluid can be evenly distributed on the ground.

### AirHammer beats all other sprayers when it comes to capacity!

With the self-steering rear axle, AirHammer operates well in the headland. The air brakes allow driving up to 40 km / h on the road. AirHammer is equipped with LS (load sensing), and all boom control features are of course proportional - providing unrivaled boom control even on demanding fields and at high speeds. AirHammer is offered with a 2-folded 36m boom, so folding is quickly done.



### Air suspension and bogie axle

The bogie axle with air pads and the powerful brakes secure a stable and calm driving.



### Control

Danfoils new PC-SprayController with touchscreen and Joystick secures a optimal and simple control of the functions of the sprayer.



### Filling pump

If mounted the filling could be done in 15 min





## Equipment for AirHammer

### Standard equipment for AirHammer

- 3 full-automatic cleaning programs
- Electrical valves operated from cabin
- Electronic check of valves for malfunction
- Electronic tank meter
- Individual boom lift also negative
- Double rotary tank cleaner
- Hydraulic driven AR 160 Diaphragm pump
- Separate pump for quick boom cleaning
- Proportional hydraulic valves for boom control
- Heated clean water tank with boom flushing system
- 15 l. handwash tank
- Pendulum boom suspension,
- 2-parted boom in aluminum
- 7 or 9 sections
- Radial high pressure fan hydraulic driven with electric air volume regulator
- 2 Liquid filters and clean water filter
- Pesticide induction unit
- Box for plant protection agents
- Mudguards
- DSC (danfoil Spray Controller) with Joystick
- Boom tilt
- Wheel axel with air suspension
- Hydraulic boom suspension
- Overflow and backflow protection
- Flexible extension

### Extra equipment for AirHammer

- Automatic horizontal levelling boom with 2 or 4 sensors
- Rough Terrain Control (RTC)
- High-pressure cleaner with hose reel
- Working light, LED
- Box for chemicals
- Electronic windmeter
- Filling equipment
- Wheel sensor
- Extra display on sprayer
- Extra mounting set
- Comfort DSC Joystick
- DSC Injection system
- Comfort 7" display
- ISOBUS GPS connection
- GPS boom and guidance computer with antenna

*Se en detaljeret beskrivelse af ekstraudstyret på side 41-45*



#### 2-parted boom

AirHammer is delivered with a 2 parted boom in aluminium so folding is quickly done.



#### Hydraulic

The hydraulic drag suspension ensures a good and stable driving.



#### Capacity: 300 ha.

Unmatched capacity, of 300 ha per filling. There is nothing similar on the market.





## Technical specifications

Technical specifications	AirHammer 10.000 I
<b>Capacity</b>	300 ha.
<b>Tank volume</b>	10.000 liter
<b>Clean water tank</b>	1000 liter
<b>Hand wash tank</b>	15 liter
<b>Booms 24-36M</b>	2-parted in aluminium
<b>Boom sections 24-28M</b>	7
<b>Boom sections 30-36M</b>	7 eller 9 delsektioner
<b>Wheel size</b>	customer-specific
<b>Pump</b>	AR 160
<b>Filters</b>	1 pressure filter, 1 suction filter, anti-drip filter, filter for clean water pump
<b>Hydraulic</b>	LS (load-sensing)
<b>Boom suspension</b>	Hydraulic boom suspension
<b>Wheel suspension</b>	Wheel axle with air suspension
<b>Spray controller</b>	DSC (danfoil Spray Controller)
<b>Weight total (empty tank)</b>	5.500 kg.
<b>Transport width</b>	315 cm (depending on boom size)
<b>Transport height</b>	400 cm

Booms Airhammer		
Booms	Sections	Section width/meters
<b>2-parted booms</b>		
<b>24 meter HD</b>	7	3+3+4+4+4+3+3
<b>28 meter HD</b>	7	3,5+3,5+4,5+5+4,5+3,5+3,5
<b>30 meter HD</b>	7	3+4+5+6+5+4+3
<b>32 meter HD</b>	9	2+2+4+5+6+5+4+2+2
<b>36 meter HD</b>	9	3+3+4+5+6+5+4+3+3





# danfoil injection DSC

- 1 to 5 pumps - maximum flexibility



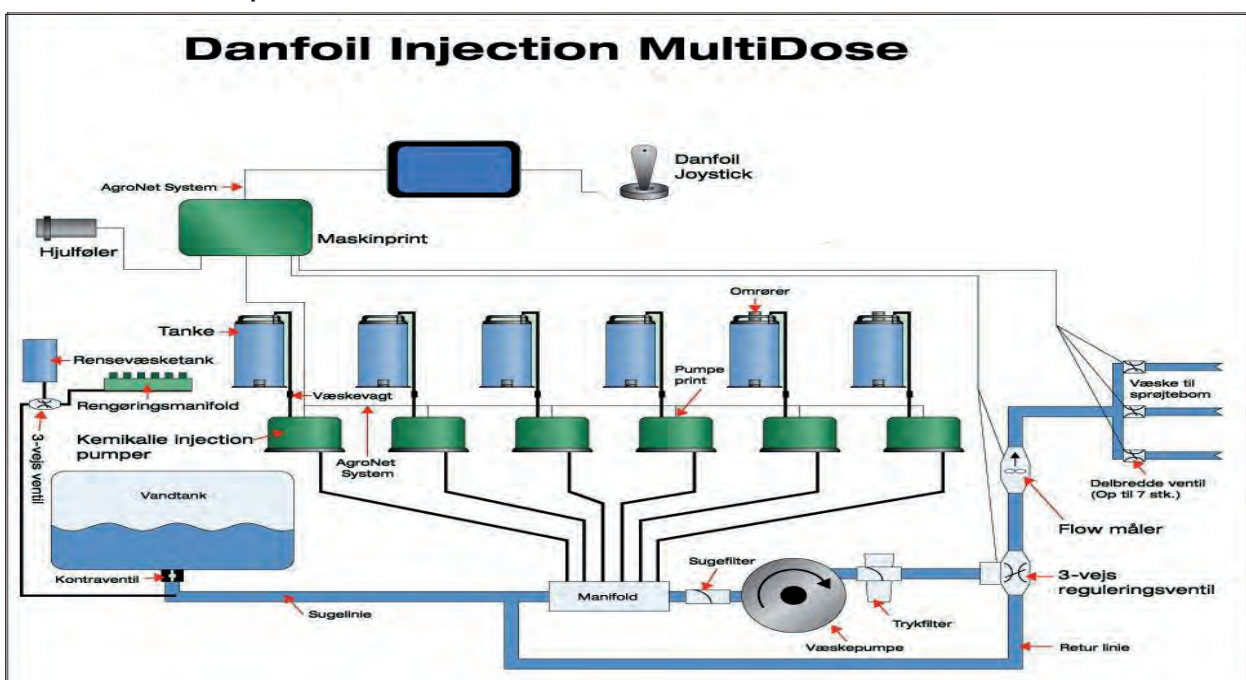


# danfoil injection

## DSC

With DSC injection system, you only use clean water in the tank, and you can dose up to five different chemicals simultaneously. The idea behind the product is, that it must be convenient to do different spray jobs on different parts of the same field. In this way you optimize your time in the field significantly, and, at the same time, achieve economical savings. By separating chemicals and water, you can avoid any waste of chemical residues, and you can control up to five dosage pumps with high accuracy.

**DSC Injection, injektionssystem for sprayers with gps steering of the injectionpumps to steer after fieldmap**



## Advantages

**Water and chemicals are kept separate;** the chemicals are kept separately, in shock-resistant containers. By doing this, you avoid any problems with residues in the water tank and spray system.

**No waste of chemical residue,** because water and chemicals are not mixed before the manifold. This allows you to save any chemical residues - that may be left after the spray is interrupted or ended - until the next spray task.

**Control of up to 5 dosage pumps** allows you to select an injection system, that suits the individual users' needs. The system can be delivered with 1 to 5 pumps.

**Easy to change chemicals,** this means that it is very simple to switch from one chemical to another. It is possible to mix up to five different pesticides simultaneously, and individual dosage.

**Dosage of water and chemicals are adjusted continuously** during spraying and can be changed independently of each other. This is done by using a user-friendly display, located in the drivers cab of the tractor.

**Simple and automatic cleaning** of the spraying system is done easily, which means that the user may precede to the next spraying immediately after the job is done.

**Great flexibility** since the injection system, combined with danfoil's spray program, allows the user to perform a full day of spraying without having to return to the base to refill or clean – which provides a significant saving in time.





# danfoil injectionssystem DSC



**Injections system**  
From 1 to 5 pumps.



**Danfoil injections pump**  
The Peristaltic pump is very precise and robust, it is easy to maintain.



**Operating**  
The dosage and the mix of chemicals is controlled from the drivers cabin.



**Clean water in the tank**  
The idea behind the injection system is to add the chemicals separately, so you only have clean water in the tank, and therefore maximum flexibility whilst spraying



**Tanks for chemicals**  
Danfoil only uses approved storage tanks for the chemicals. They are available in either 28 l or 100 l. The tanks can be delivered with or without agitator and will be mounted on specific platforms.



**Pump for agitation of the tank (extra equipment)**  
An extra pump for agitation can be mounted in the main tank, which secures further flexibility, as this makes it possible to add chemicals directly in the main tank.



**Cleaning system**  
Automatic cleaning system with a separate cleaning tank, secures both a clean system, and no mix of different chemicals



**Calibration**  
The injections system requires calibration depending on different types of chemicals. With the danfoil injection system, this is easily operated on the sprayer.



# Suggested equipment package for danfoil DSC injection system

## Injection system with 1 pump

- Large 7" DSC touchscreen
- Std. wheel sensor, flow gauge, 3-way valve
- 1 pcs. 28 l. tank without agitator
- Calibrating set
- Automatic wash system

## Injection system with 2 pumps

- Large 7" DSC touchscreen
- Std. wheel sensor, flow gauge, 3-way valve
- 1 pcs. 28 l. tank with agitator
- 1 pcs. 100 l. tank without agitator
- Calibrating set
- Automatic wash system

## Injection system with 3 pumps

- Large 7" DSC touchscreen
- Std. wheel sensor, flow gauge, 3-way valve
- 1 pcs. 28 l. tank without agitator
- 1 pcs. 28 l. tank with agitator
- 1 pcs. 100 l. tank with agitator
- Calibrating set
- Automatic wash system

## Injection system with 4 pumps

- Large 7" DSC touchscreen
- Std. wheel sensor, flow gauge, 3-way valve
- 1 pcs. 28 l. tank without agitator
- 1 pcs. 28 l. tank with agitator
- 1 pcs. 100 l. tanks without agitator
- 1 pcs. 100 l. tanks with agitator
- Calibrating set
- Automatic wash system

## Injection system with 5 pumps

- Large 7" DSC touchscreen
- Std. wheel sensor, flow gauge, 3-way valve
- 1 pcs. 28 l. tank without agitator
- 2 pcs. 28 l. tanks with agitator
- 1 pcs. 100 l. tanks without agitator
- 1 pcs. 100 l. tanks with agitator
- Calibrating set
- Automatic wash system

## Optional extras for injection system

- 28 l. tank without agitator
- 28 l. tank with agitator
- 100 l. tank without agitator
- 100 l. tank with agitator
- Extra frame for 1 large or 2 small tanks
- Chemical mixer including pump for agitation
- Pump for agitation incl. flowregulating
- Hydraulic platform for inj. tanks

*Sprayers mounted with danfoil DSC Injection system are without chemical mixer, external draw and rotary tank cleaner.*

*The system will be delivered with AR 813 pump.*

*It is not possible to mount the injection system on used sprayers..*





# danfoil DSC Spray Controller



# danfoil DSC Spray Controller

- ver. I

## Welcome to the future

With DSC (danfoil Spray Controller), danfoil has gathered all spray control on a single display, with great graphic freedom. It is possible to clean the sprayer via the automatic washing program, directly from the cabin. The system comes standard with a Touch Screen monitor and associated SC-joystick, which allows for easy and quick handling of the most used functions.

## All functions controlled from one touch screen

The integrated steering manages all the field sprayers functions, including control of air pressure (m bar), liquid control, all hydraulic functions, self tracking drawbar, boom height, sections, individual boom lift, GPS-navigation, liquid valves and general control of all extra equipment, e.g. high-pressure cleaner. Cleaning of hoses and main tank is also possible from the cabin, just a simple touch on the screen.

The interface is simple and managable, and shows only the necessary functions and informations. It comes with a joystick for operating the most frequently used functions when the sprayers is running.

Based on the concrete job, the display changes on the DSC, which makes operating the DSC very logic and easy for everyone to use.

## Integrated help function

DSC (danfoil Spray Controller) has an integrated help feature installed, so e.g. the functions of the joystick will be shown on the screen.

## Advantages

- Automatic cleaning system
- One screen with all functions and information's
- Easily operated touch screen
- Perfect graphical overview
- Quick overview of the sprayers functions
- Built-in warning system
- Guides and charts uploaded on screen

## Extra equipment

- additional touch screen on the sprayer
- Upgrade to DSC 7" Comfort joystick





# Extra equipment AirBoss, ConCorde II, Airforce 1 and AirHammer



## Individual boom lift

The boom follows the terrain, both above and below the horizontal. Individual boom lifts provide maximum flexibility for boom control

Model	Status
AirBoss 15-24 m	+
ConCorde II 20-28 m	+
ConCorde II 30-36 m	✓
Airforce 1 24-36 m	✓
AirHammer 24-36 m	✓



## Automatic horizontal leveling boom

The self-leveling boom ensures a constant height of the boom over the crops, regardless of terrain variations. This way you avoid adjusting the boom and can concentrate on spraying. Sensors on the boom are adjusted via ultrasound from the field and crop.

Model	Status
AirBoss 15-24 m	+
ConCorde II 20-28 m	+
ConCorde II 30-36 m	+
Airforce 1 24-36 m	+
AirHammer 24-36 m	+



## Rough Terrain Control

Utilizing state of the art gyroscopic technology and up to 7 ultrasonic sensors, the wings are controlled above and below horizontal. This ensures a very stable boom in even the most challenging terrain.

Model	Status
AirBoss 15-24 m	+
ConCorde II 20-28 m	+
ConCorde II 30-36 m	+
Airforce 1 24-36 m	+
AirHammer 24-36 m	+



## TeeJet GPS

With automatic boom section control you achieve optimal screening thereby avoiding any overlap of the field, allowing you to concentrate on spraying. New boom section equipment from danfoil can use everything from Egnos to RTK-signals, and can at the same time be used on tractors that are prepared for automatic steering.

Model	Status
AirBoss 15-24 m	+
ConCorde II 20-28 m	+
ConCorde II 30-36 m	+
Airforce 1 24-36 m	+
AirHammer 24-36 m	+



## ISOBUS GPS

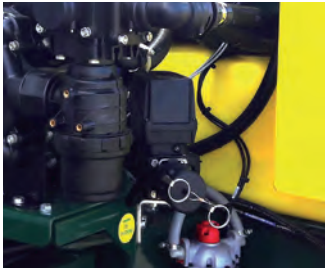
If the tractor is equipped with an ISO-BUS GPS, it is possible to use it to control the sections and the delivered liquid rate from the sprayer.

Model	Status
AirBoss 15-24 m	+
ConCorde II 20-28 m	+
ConCorde II 30-36 m	+
Airforce 1 24-36 m	+
AirHammer 24-36 m	+

- ✓ = Standard equipment
- + = Extra equipment
- ± = Not possible



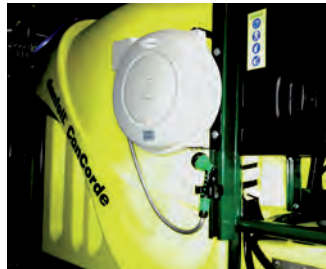
# Extra equipment AirBoss, ConCorde II, Airforce 1 and AirHammer



## Automatic filling equipment

With the auto fill equipment you know exactly how many liters you have filled into the spray tank. You enter water quantity and the filling equipment will stop automatically when the desired quantity is reached.

Model	Status
AirBoss 15-24 m	+
ConCorde II 20-28 m	+
ConCorde II 30-36 m	+
Airforce I 24-36 m	+
AirHammer 24-36 m	+



## Washing equipment

With washing equipment it is possible to clean the sprayer in the field. The attached hose reel uses hot water from the clean water tank.

Model	Status
AirBoss 15-24 m	+
ConCorde II 20-28 m	+
ConCorde II 30-36 m	+
Airforce I 24-36 m	+
AirHammer 24-36 m	+



## High-pressure cleaner

With the high-pressure cleaner you can clean the sprayer effectively with heated water from the clean water tank.

Model	Status
AirBoss 15-24 m	+
ConCorde II 20-28 m	+
ConCorde II 30-36 m	+
Airforce I 24-36 m	+
AirHammer 24-36 m	+



## TrackControl - selftracking drawbar

ConCorde trailed field sprayer can be delivered with self tracking drawbar, which ensures that the ConCorde always follow the tractor tracks. This way you will avoid unnecessary descent of crops – and ultimately achieve a better yield.

Model	Status
AirBoss 15-24 m	÷
ConCorde II 20-28 m	+
ConCorde II 30-36 m	+
Airforce I 24-36 m	÷
AirHammer 24-36 m	✓



## Box for chemicals

Allows you to store chemicals and other protective remedies.

Model	Status
AirBoss 15-24 m	+
ConCorde II 20-28 m	+
ConCorde II 30-36 m	+
Airforce I 24-36 m	+
AirHammer 24-36 m	+



## Electronic wind meter

The electronic wind meter provides you with information about wind speed and wind direction.

Model	Status
AirBoss 15-24 m	+
ConCorde II 20-28 m	+
ConCorde II 30-36 m	+
Airforce I 24-36 m	+
AirHammer 24-36 m	+

- ✓ = Standard equipment
- + = Extra equipment
- ÷ = Not possible





# Extra equipment AirBoss, ConCorde II, Airforce 1 and AirHammer



## Hedgerow nozzles

The hedgerow nozzles are positioned angled and gives extra reach.



## Working light for boom

With the LED working light for the boom a good overview is provided while spraying in the dark.



## Protection shield

The protection shield is mounted under the chassis to reduce damage of the crop, it also makes cleaning of the sprayer much easier.

Model	Status
AirBoss 15-24 m	+
ConCorde II 20-28 m	+
ConCorde II 30-36 m	+
Airforce I 24-36 m	+
AirHammer 24-36 m	+

Model	Status
AirBoss 15-24 m	+
ConCorde II 20-28 m	+
ConCorde II 30-36 m	+
Airforce I 24-36 m	+
AirHammer 24-36 m	+

Model	Status
AirBoss 15-24 m	÷
ConCorde II 20-28 m	+
ConCorde II 30-36 m	+
Airforce I 24-36 m	÷
AirHammer 24-36 m	÷



## Equipment for liquid fertilizer

By adding an extra pipe on the boom, you have the opportunity to distribute liquid fertilizer. By using the extra spray line you also avoid unnecessary wear on your primary spray line.

Model	Status
AirBoss 15-24 m	+
ConCorde II 20-28 m	+
ConCorde II 30-36 m	+
Airforce I 24-36 m	+
AirHammer 24-36 m	+

- ✓ = Standard equipment
- + = Extra equipment
- ÷ = Not possible



# Extra equipment AirBoss, ConCorde II, Airforce 1 and AirHammer



## Additional display

An additional display could be mounted on the side of the sprayer to control all function from outside the cabin.



## Comfort Joystick

Comfort handle grip for better comfort.



## Pneumatic brakes

If the tractor is equipped with compressor the sprayer could be supplied with pneumatic brakes as an alternative to hydraulic brakes.

Model	Status
AirBoss 15-24 m	+
ConCorde II 20-28 m	+
ConCorde II 30-36 m	+
Airforce I 24-36 m	✓
AirHammer 24-36 m	+

Model	Status
AirBoss 15-24 m	+
ConCorde II 20-28 m	+
ConCorde II 30-36 m	+
Airforce I 24-36 m	+
AirHammer 24-36 m	+

Model	Status
AirBoss 15-24 m	+
ConCorde II 20-28 m	+
ConCorde II 30-36 m	+
Airforce I 24-36 m	+
AirHammer 24-36 m	✓



## Extra mounting-set

If the sprayer must be mounted on several tractors, it is possible to mount an extra set on tractor number 2.



## Comfort display

An extra large display of 7 " gives a better overview of the icons on the screen. It is standard on sprayers with DSC injection systems

Model	Status
AirBoss 15-24 m	+
ConCorde II 20-28 m	+
ConCorde II 30-36 m	+
Airforce I 24-36 m	+
AirHammer 24-36 m	+

Model	Status
AirBoss 15-24 m	+
ConCorde II 20-28 m	+
ConCorde II 30-36 m	+
Airforce I 24-36 m	✓
AirHammer 24-36 m	+

- ✓ = Standard equipment
- + = Extra equipment
- ⊕ = Not possible





# Extra equipment AirBoss, ConCorde II, Airforce 1 and AirHammer



## Pump for agitation of tank

As optional equipment for the injection system you can install an extra pump for agitation. This provides additional flexibility as there may be added pesticides directly into the tank.

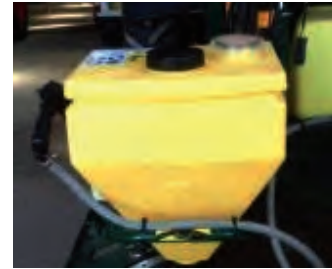
Model	Status
Inject. 1-5 pumper	+



## Hydraulic platform for inj. tanks

The platform can be lowered 20 cm from the bottom, for optimal working height.

Model	Status
Inject. 1-5 pumper	+



## Cleaning of chemical cans

An additional chemical mixer can be used for cleaning the emptied cans and for storing residual chemicals. These can subsequently be carried out on the fields

Model	Status
Inject. 1-5 pumper	+



## Extra tanks for injection system

The tanks to the injection system are suitable for permanent storage of chemicals. Therefore, many choose to buy additional tanks, so these can be mounted on the sprayer, depending on the specific job.

Model	Status
Inject. 1-5 pumper	+



## Extra frame for injection tanks

An extra frame for the injection tanks can be mounted, if you want to bring along extra tanks – this also increases flexibility.

Model	Status
Inject. 1-5 pumper	+

- ✓ = Standard equipment
- + = Extra equipment
- + = Not possible

## Thank you for your interest in danfoil field sprayers

Our sales representatives are more than happy to discuss our spray concept with you and describe what specific benefits you could achieve by using a danfoil field sprayer on your farm.

### **Demonstration of a danfoil sprayer at your farm**

Our sales representatives are continuously demonstrating danfoil sprayers and we will gladly pay you a visit and show how you the advantages you can achieve by using a danfoil sprayer. This also provides you with a unique opportunity to try the sprayer and the spray concept at you farm – you are guaranteed to be convinced.

### **24 hour service**

We want to ensure, that you get the best possible start with your new field sprayer. Therefore, we offer nation-wide service, which is handled by our own professional service people. We know it can be expensive if the field sprayer, for some reason, is not working; therefore we are responding quickly. In the spraying season we offer 24-hour service so that you can always get a hold of us.

## - less is more...

- less liquid consumption
- more capacity
- less costs
- more spraying hours
- less fuel consumption
- more efficient spraying

**danfoil**®

Jellingvej 14 | DK-9230 Svenstrup J  
Tlf. +45 98 67 42 33  
[www.danfoil.dk](http://www.danfoil.dk) | [info@danfoil.dk](mailto:info@danfoil.dk)